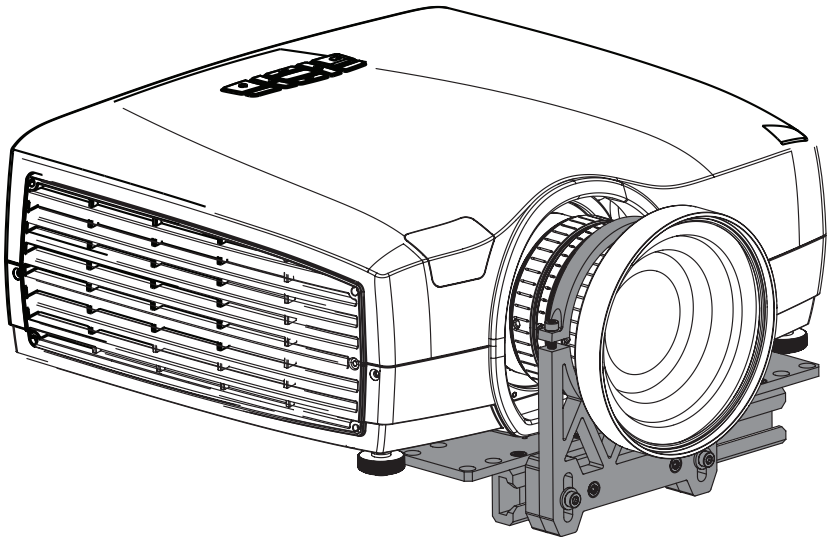


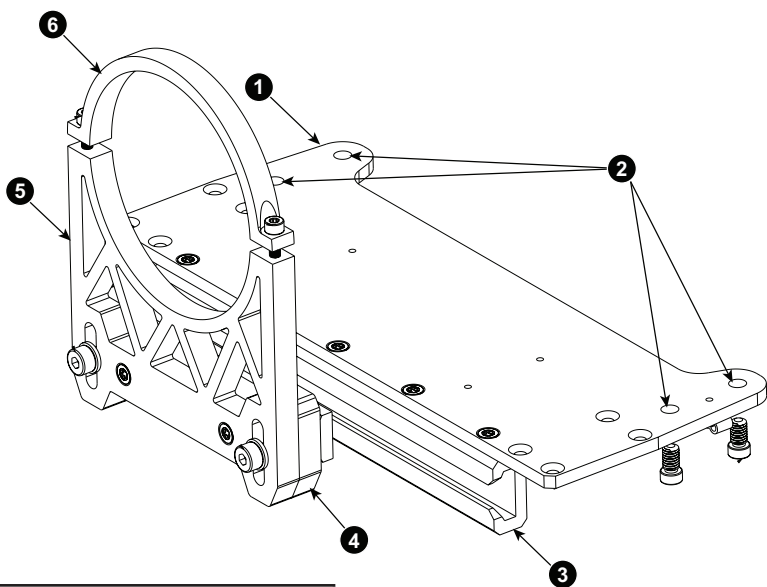
Lens Support Kit

F50 series



User and Installation Manual
601-0367-00

Lens Support Kit



Item	Description
1	Baseplate
2	Mounting screws (4 pcs M6 x 12)
3	Shim
4	Sliding rail
5	Lower lens ring bracket
6	Upper lens ring bracket

Installation

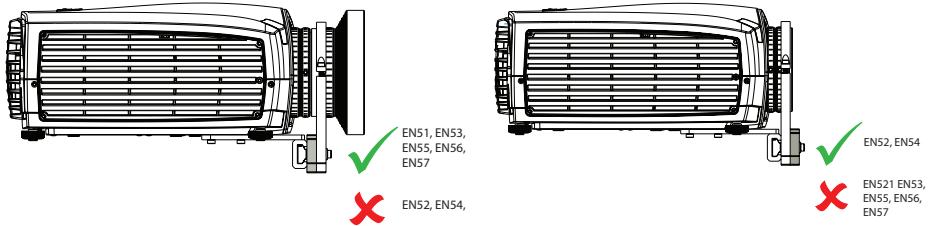
General advice

- Use caution when tightening screws. Applying too much force may cause damage to the lens or lens support.
- It is recommended that zoom, focus and iris positions are locked using their respective Z-lock screw (*tool: 1.5mm allen key*) before mounting the lens support.
- Lens shift should be disabled in the projector (service) menu after mounting the lens support kit. Contact your Barco service representative for assistance if required.

Installation

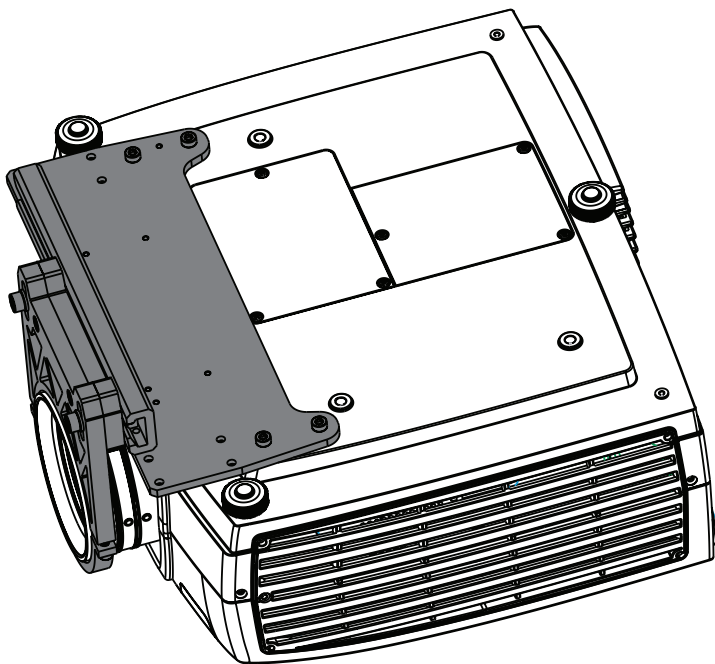
Mounting on different lenses

Before mounting the lens support kit on the EN52 and EN54 lenses, the lower lens ring bracket should be rearranged so that the shim is on the side furthest from the projector.



Procedure

1. Remove the projector lens.
2. Use the mounting screws (2) to mount the baseplate (1) to the underside of the projector.
3. Loosen the 2 connection screws on the lens ring bracket and remove the upper lens ring bracket (6).
4. Check that the shim (4) position is correct for the type of lens you are using.
5. Loosely mount the lower lens ring bracket (5) to the sliding rail (3). Do not over tighten.
6. Replace the projector lens. If required, adjust the lens settings.
7. Replace the upper lens rings bracket (6) and tighten the 2 connection screws firmly.
8. Tighten the lower lens ring/sliding rail screws firmly.



Barco nv

Noordlaan 5, B-8520 Kuurne

Phone: +32 56.36.82.11

Fax: +32 56.36.883.86

Support: www.barco.com/esupport

Visit us at the web: www.barco.com

Production Address

Habornveien 53

N-1630 Gamle Fredrikstad

Phone: +47 6930 4550

Fax: +47 6930 4580